



# NOTICE OF STUDY COMMENCEMENT

## **SNIVELY WETLAND OUTLET, SWMF 2-14 (PARADELLE) AND SWMF 2-15 (WORTHINGTON) SCHEDULE B ENVIRONMENTAL ASSESSMENT**

The City of Richmond Hill is undertaking the Snively Wetland, Stormwater Management Facility 2-14 (Paradelle Drive) and Stormwater Management Facility 2-15 (Worthington Avenue) Environmental Assessment ("Study") to determine the current state of Snively Wetland, SWMF 2-14 and SWMF 2-15, and to identify and assess potential alternatives for improvement of the wetland's water level conditions through an evaluation of alternative outlet structure scenarios.

The objective is to identify a preferred alternative to improve the hydraulic state of the wetland, and to enhance the performance of the existing stormwater facilities. The study area is shown on the reverse of this page, and it is bound by Bayview Avenue to the east, Worthington Avenue to the west, Snively Street to the south and Paradelle Drive to the north.

The study is being conducted in accordance with Schedule B of the Municipal Class Environmental Assessment process.

To facilitate community input, a Public Open House is scheduled to be held in Spring 2023. The notice of the open house will be mailed to homes in the nearby neighbourhood, and information will also be available on the City's website, [RichmondHill.ca/SnivelyEA](http://RichmondHill.ca/SnivelyEA), where all relevant project information can also be found.

Should you have any questions or comments, require further information, or wish to be added to the study mailing list for future updates, please contact one of the Study Team members:

Kristina Delidjakova, M.Sc.  
Coordinator, Water Resources  
City of Richmond Hill  
225 East Beaver Creek  
Richmond Hill, ON L4B 3P4  
905 771 5539

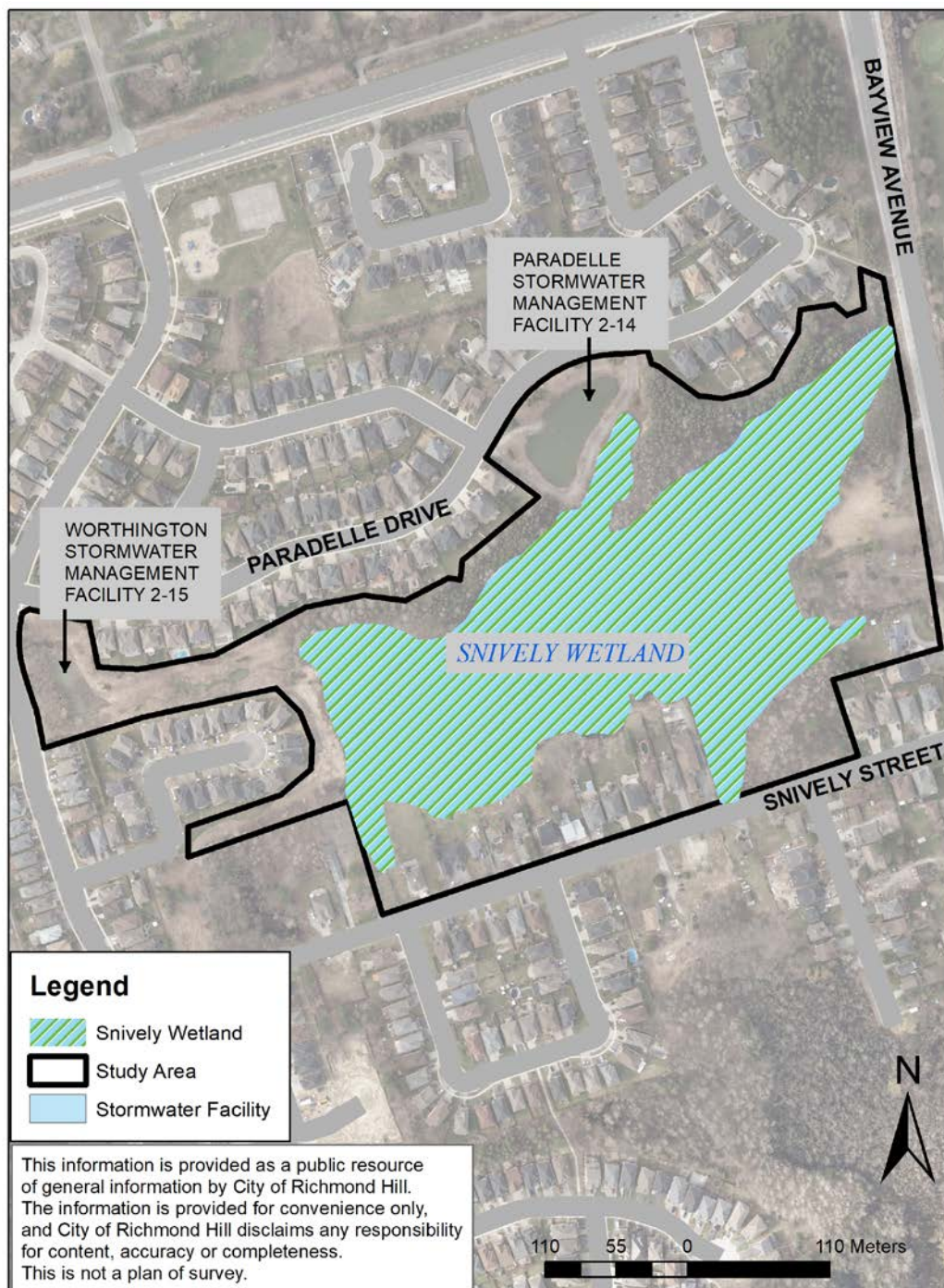
[kristina.delidjakova@richmondhill.ca](mailto:kristina.delidjakova@richmondhill.ca)

Alison Gingrich Regehr, MSc, EIT, CAN-CISEC  
Consultant Project Manager  
Aquafor Beech Ltd.  
55 Regal Rd, Unit 3  
Guelph ON, N1K 1B6  
519 778 0257

[gingrichregehr.a@aquaforbeech.com](mailto:gingrichregehr.a@aquaforbeech.com)

For all other stormwater management inquiries in the City,  
please email us at [stormwater@richmondhill.ca](mailto:stormwater@richmondhill.ca)

This notice was issued November 28, 2022.



Any personal information is collected under the authority of the Municipal Act 2001, S.O. 2001, c.25, and the Environmental Assessment Act, R.S.O. 1990, c. E.18. This information will be used and/or disclosed for the purposes of compiling comments, responses and related activities for the assessment process. Individuals who submit correspondence should be aware that any personal information in their communication will become part of the public record. The City will make it available to the public, unless the individual expressly requests the City to remove the personal information from the public record. Questions about the collection of this information may be directed to Kristina Delidjakova, at 905-771-5539, 225 East Beaver Creek Rd, Richmond Hill, Ontario L4B 3P4.